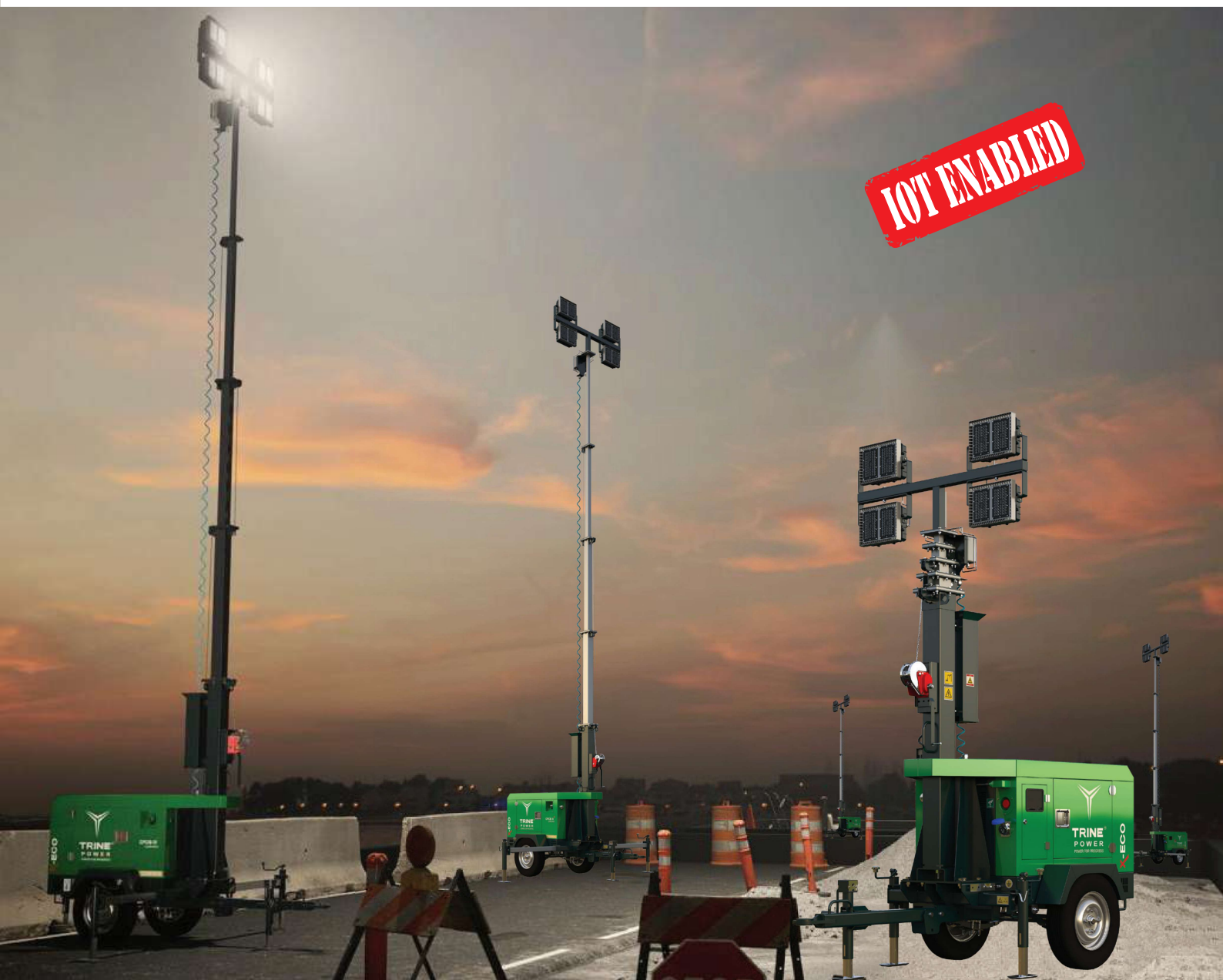


LIGHTING THE
MOMENTS
WHERE PROGRESS
BEGINS...



POWER FOR PROGRESS

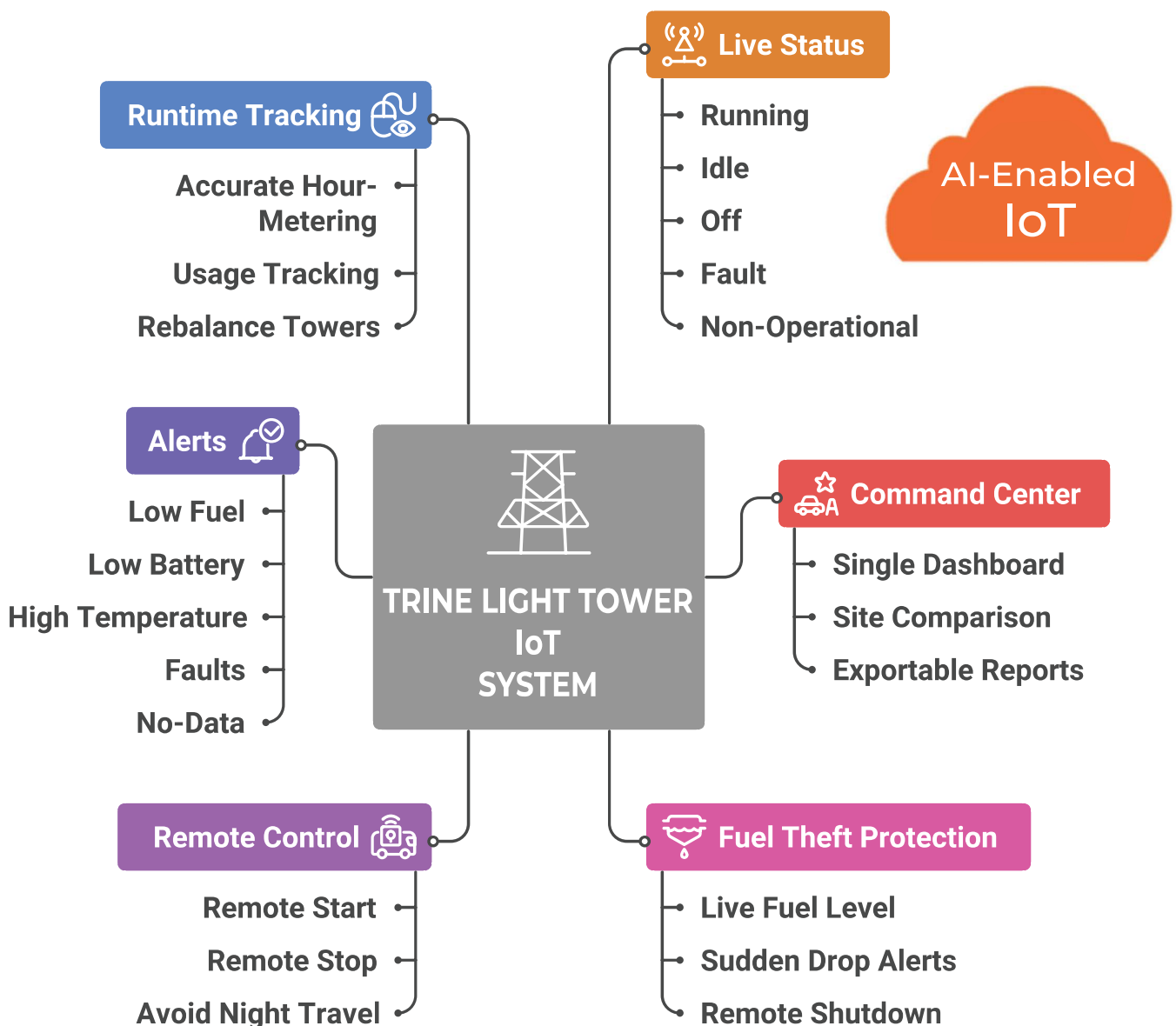
POWER FOR PROGRESS

Across India, progress doesn't wait for daylight. It moves through night shifts, monsoon storms, remote terrains, and the forgotten edges of our cities and fields.

That's why Trine builds mobile light towers designed to arrive where work begins—lighting highways, mines, farms, rescue zones, Oil and Gas refineries and sports events that keep India moving. Our towers don't just illuminate. They enable work. They enable safety. They enable progress itself.

- ✈ Advanced LED Floodlight Technology.
- ✈ Robust, Weather-Resistant Construction.
- ✈ Reliable Power System.
- ✈ Compact & Portable for Easy Transport.
- ✈ Low Fuel Consumption & CPCB - IV+ compliant.
- ✈ Long Runtime on a Single Refuel.

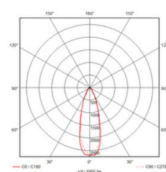
TRINE LIGHT TOWER IoT SYSTEM



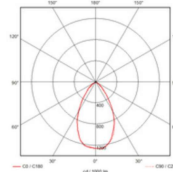
NEW INNOVATIVE LED LAMPS

- Offers 3x area coverage compared to traditional high mast poles, delivering better light spread over larger spaces.
- High efficiency lighting – reduces diesel consumption and lowers operating costs.
- 150 lm/W high efficiency.
- Special optics for wider area coverage.
- Lower diesel consumption per hour by @30% for same illumination and area coverage.
- Long product life of 100,000 hours (double than regular LED).
- IP66 dust proof and water proof, even suitable for extreme conditions of heavy rain, desert sand, snowfall, etc.

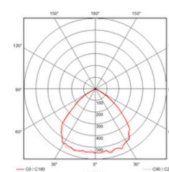
PHOTOMETRIC POLAR CURVES



30°



60°

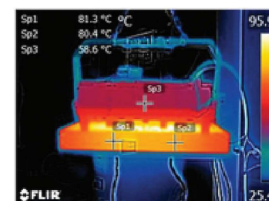
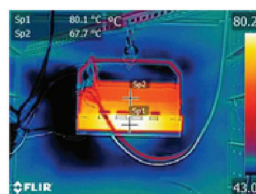


90°

LED LAMPS



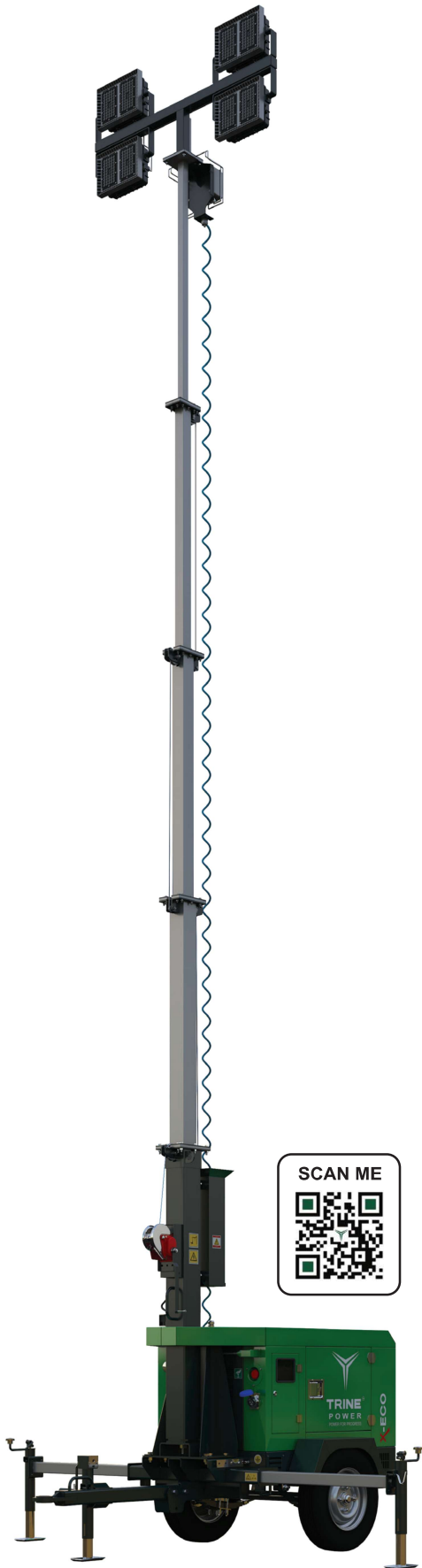
THERMAL IMAGES



DEEP SEA CONTROLLER

- Intelligent Automatic Operation.
- Advanced Engine & Generator Protection.
- User-Friendly Digital Interface.
- Remote Monitoring & Control Ready.
- Rugged, Field-Proven Reliability.





TRINE POWER LLP

- 📍 PAP V - 93, Phase -2, Vasuli, Tal - Khed,
MIDC Chakan, MH - 410501, India
- ✉ Email : marketing@trinepower.co.in
- 🌐 www.trinepower.co.in
- ☎ +91 - 8847 733 733

TECHNICAL HIGHLIGHTS

ENGINE

Engine Model	Rehiko (Kohler / Lombardini)
Engine Speed (rpm)	3000
Engine Rated Output (PRP) (kW)	6.1
Coolant	Air Cooled
Number of Cylinders	1
Emission Norms	CPCB IV ⁺

PERFORMANCE DATA

Rated Frequency (Hz)	50
Rated Voltage (VAC)	230
Rated Power (PRP)	5 kw (6.25 kVA)
Operating temp. (°C)	0 / 50
Sound power level (LwA) (dB) A	86
Sound pressure level (LpA) at 7m, (dB) A	<70 at 1 mtr

Energy Consumption

Fuel Type	Diesel
Fuel tank capacity (l)	60
Fuel consumption (Lights only)	0.80 LPH
Fuel Consumption (100% Load)	1.3 LPH
Runtime (hrs)	70

Alternator

Alternator make	NSM / Meccalte (Italy)
Alternator type	Brushless capacitor
Alternator rated output (kVA)	5
Insulation / Enclosure protection	H / 23

Parameter

Light coverage (m²)	5,000 (average 20 luxes)
Lamps	LED
Extra features	IoT Enabled

Lights

Floodlights	LED
Wattage (W)	4 x 300
Lumens (lm)	1,80,000 Lumens
LED Life	100,000 hours

Power Output

Auxiliary Power (kW)	16 AMPS
Inlet Plug	6A, 230/240V, USB Charging Port

Mast

Mast type	Vertical Manual (5 section)
Mast rotation (degrees)	355
Mast maximum height (m)	8
Mast Sections	5
Mast Erection Time	< 3 minutes
Mast Coating	Hot Dip Galvanizing
Max Wind Speed (km/h)	85

Enclosure and Trailer

Enclosure	Tough Steel with High Corrosion Resistant
-----------	---

Dimensions and Weight

Transport dimensions Fix Towbar L x W x H x (m)	1.9 x 1.1 x 2.4
Operating Dimensions (m) L x W x H x (m)	2.8 x 2.8 x 8
Weight (Dry / Wet, kg)	600 / 670

IoT

Remote Monitoring, Data Access, Remote Diagnosis, GEO Fencing, Remote ON/OFF
--